

**Power Ring Film Capacitor
260 μ F, 750 Vdc**

The 700A26797-245 Power Ring assembly is a 260 μ F, 750 Vdc dual-winding DC Link Capacitor integrated with a laminar bus. The assembly has an ESR of 900 micro-Ohms at 20kHz, an ESL of less than 8nH and a life of more than 10,000 hours at a typical drive cycle for an 80-120 kW inverter.

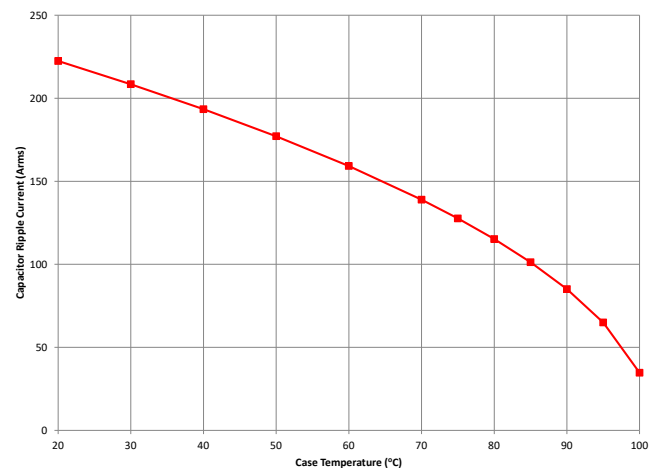


Electrical Specifications

Part #: 700A26797-245
Capacitance/Tolerance: 260 μ F \pm 10%
DC Voltage Rating: 750 Vdc
Dielectric: Metallized polypropylene film
ESL at IGBT Terminals: Less than 8 nH

Typical ESR vs. Frequency: 900 μ Ω at 20 kHz
Continuous DC Voltage Rating: 750 Vdc up to 85°C (de-rate linearly from 750 to 500 Vdc from 85°C to 105°C)
Dielectric Withstand Test Voltage: Units 100% tested at DC voltage of 950 Vdc for 2 minutes at 25°C
Operating Temperature: -40°C to +105°C
Maximum Peak Current: 200 Arms (not to exceed 2 minutes and 85°C hotspot at 750 Vdc)

RMS Current Rating



Ripple current versus case temperature for 10,000 hour life with continuous operation at 700 Vdc.

Mechanical Specifications

Dimensions: See layout drawing for details

Bus Structure: Tin plated copper, 0.060" (1.50 mm) thick

Packaging: Polycarbonate enclosure encapsulated with RTV

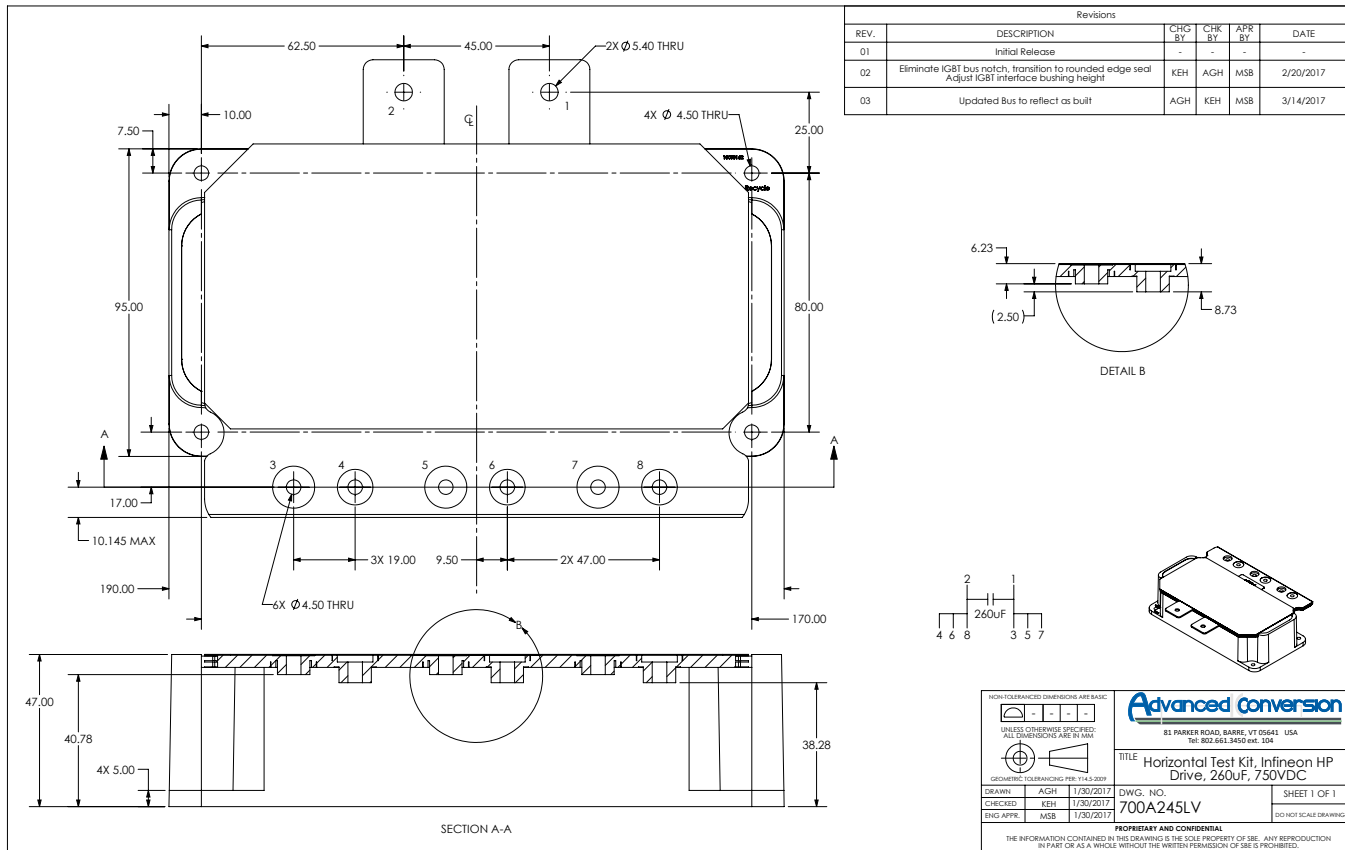
IGBT Connection Type: Thru-hole connections for Infineon HP Drive™

Construction: Dual windings integrated to a laminar bus

Marking:

APCS	company identification
700A245	"short form" part number
260 µF ±10%	Capacitance value and tolerance
750 Vdc	DC voltage rating
yyww-lot#-unit	Serial number (date code, lot number, unit number)

Layout Details:



Contact Advanced Conversion to discuss your specific requirements.

Advanced Conversion reserves the right to amend design data