

Preliminary Datasheet

Integrated Capacitor/bus assembly 135 μ F, 900 Vdc with NanoPlex LDF film for operation up to 125°C

The 910A104 Power Ring assembly is a 135 μ F, 900 Vdc dual-winding DC Link Capacitor integrated with a laminar bus. The assembly has an ESR of 850 μ Ω at 20 kHz, an ESL of 8 nH, and a life of more than 10,000 hours at a typical drive cycle for an 80-120 kW inverter.



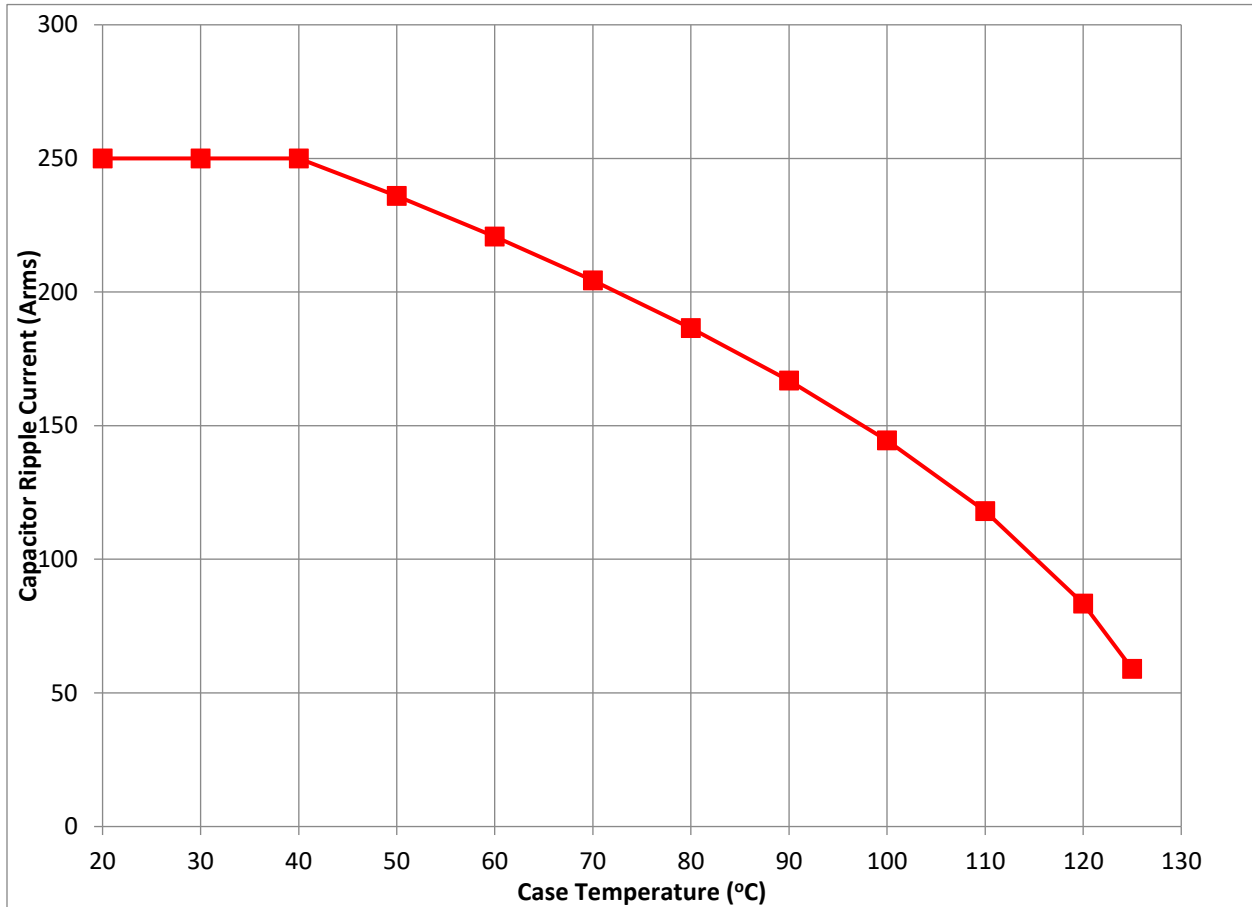
Electrical Specifications

Part #:	910A104
Capacitance/Tolerance:	135 μ F \pm 10%
Dielectric:	Metallized high temp film
ESL at Module Terminals:	8nH
Typical ESR vs. Frequency:	850 μ Ω at 20 kHz
Continuous DC Voltage Rating:	900 Vdc up to 125°C (de-rate linearly from 900 Vdc to 540 Vdc from 125°C to 150°C)
Maximum DC Voltage:	Units 100% tested at DC voltage of 1,125 Vdc for 2 minutes at 25°C
Operating Temperature:	-40°C to +125°C
Maximum Peak Current:	250 Arms (not to exceed 2 minutes and 130 °C hotspot at 900 Vdc)

Mechanical Specifications

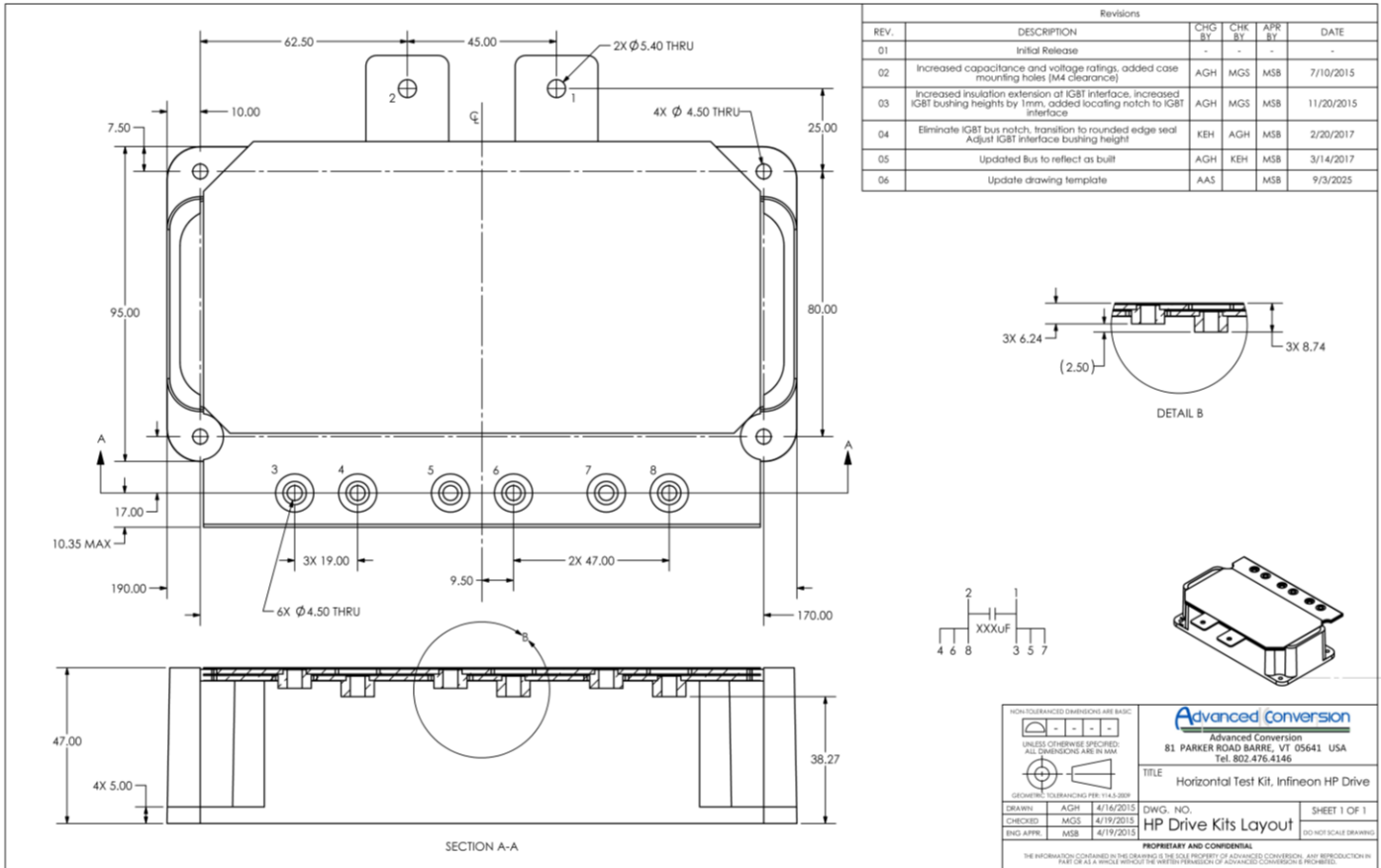
Dimensions:	See layout drawing for details
Bus:	Tin plated copper, 0.060" (1.50 mm) thick
Packaging:	Polycarbonate enclosure encapsulated with RTV
Module Connection:	Thru-hole bushing connections for Infineon HybridPACK™ Drive and OnSemi VE-Trac™ Direct.
Construction:	Dual windings integrated to a laminar bus
Marking:	
APCS	APCS company identification
910A104	Part number
135 μ F \pm 10%	Capacitance value and tolerance
900 Vdc	DC voltage rating
yyww-lot#-unit	Serial number (date code, lot number, unit number)

Rating Curve:



Ripple current versus case temperature for 10,000-hour life with continuous operation.

Layout Details:



Revision Table		
Revision	Description	Date
Rev 1	Initial release	5/8/2026

Advanced Conversion
 81 Parker Road • Barre, VT 05641 USA
 Tel: 802-661-3450
 Web: www.advanced-conversion.com

Advanced Conversion reserves the right to amend design data without notice.